



# Lyreco National Distribution Centre

Telford, UK

Location:   
Capacity: 500,000 sq ft  
PV Area: 13,860 sq m

**3.8<sup>MWp</sup>**

System

**1,700,000<sup>KG CO<sub>2</sub></sup>**

Equivalent

**13,860**

sq m

Commercial  
rooftop PV  
system

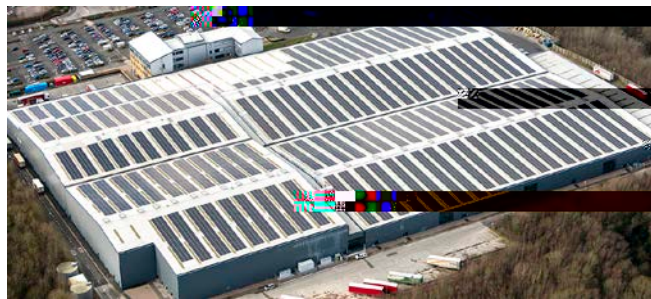
*"The Lyreco project demanded a reliable turnkey installation that would be fit for purpose for years to come. To achieve this aim, we needed a module manufacturer renowned for innovation, quality, sophistication and durability which led us to partner with Trina Solar."*

James, Project Manager - Lyreco  
EvoEnergy

As a result of a long and successful partnership with Trina Solar, Lyreco has installed a 3.811 MW PV system at its Distribution Centre in Walsley, West Yorkshire. The system consists of 13,860 Trina Solar TSM-DC05A.08 H M 275W modules.

The system is a 7.5 MWp system, which is the largest PV system in the UK. It is a 7.5 MWp system, which is the largest PV system in the UK. It is a 7.5 MWp system, which is the largest PV system in the UK.

The system is a 7.5 MWp system, which is the largest PV system in the UK. It is a 7.5 MWp system, which is the largest PV system in the UK. It is a 7.5 MWp system, which is the largest PV system in the UK.



The system is a 7.5 MWp system, which is the largest PV system in the UK. It is a 7.5 MWp system, which is the largest PV system in the UK. It is a 7.5 MWp system, which is the largest PV system in the UK.

The system is a 7.5 MWp system, which is the largest PV system in the UK. It is a 7.5 MWp system, which is the largest PV system in the UK. It is a 7.5 MWp system, which is the largest PV system in the UK.

The system is a 7.5 MWp system, which is the largest PV system in the UK. It is a 7.5 MWp system, which is the largest PV system in the UK. It is a 7.5 MWp system, which is the largest PV system in the UK.



Pictures (3) © EvoEnergy

## Lyreco Distribution Centre

### LOCATION

Tyler, UK

### SYSTEM TYPE

Commercial PV

### SYSTEM SIZE

3.811 MW

### PRODUCT

TSM-DC05A.08 H M 275W

### NUMBER OF MODULES

13,860

### ANNUAL ENERGY OUTPUT

3,200 MWh

### COMPLETION DATE

January 2016

## Trina Solar H M P- PVM

The system is a 7.5 MWp system, which is the largest PV system in the UK. It is a 7.5 MWp system, which is the largest PV system in the UK. It is a 7.5 MWp system, which is the largest PV system in the UK.

The system is a 7.5 MWp system, which is the largest PV system in the UK. It is a 7.5 MWp system, which is the largest PV system in the UK. It is a 7.5 MWp system, which is the largest PV system in the UK.

